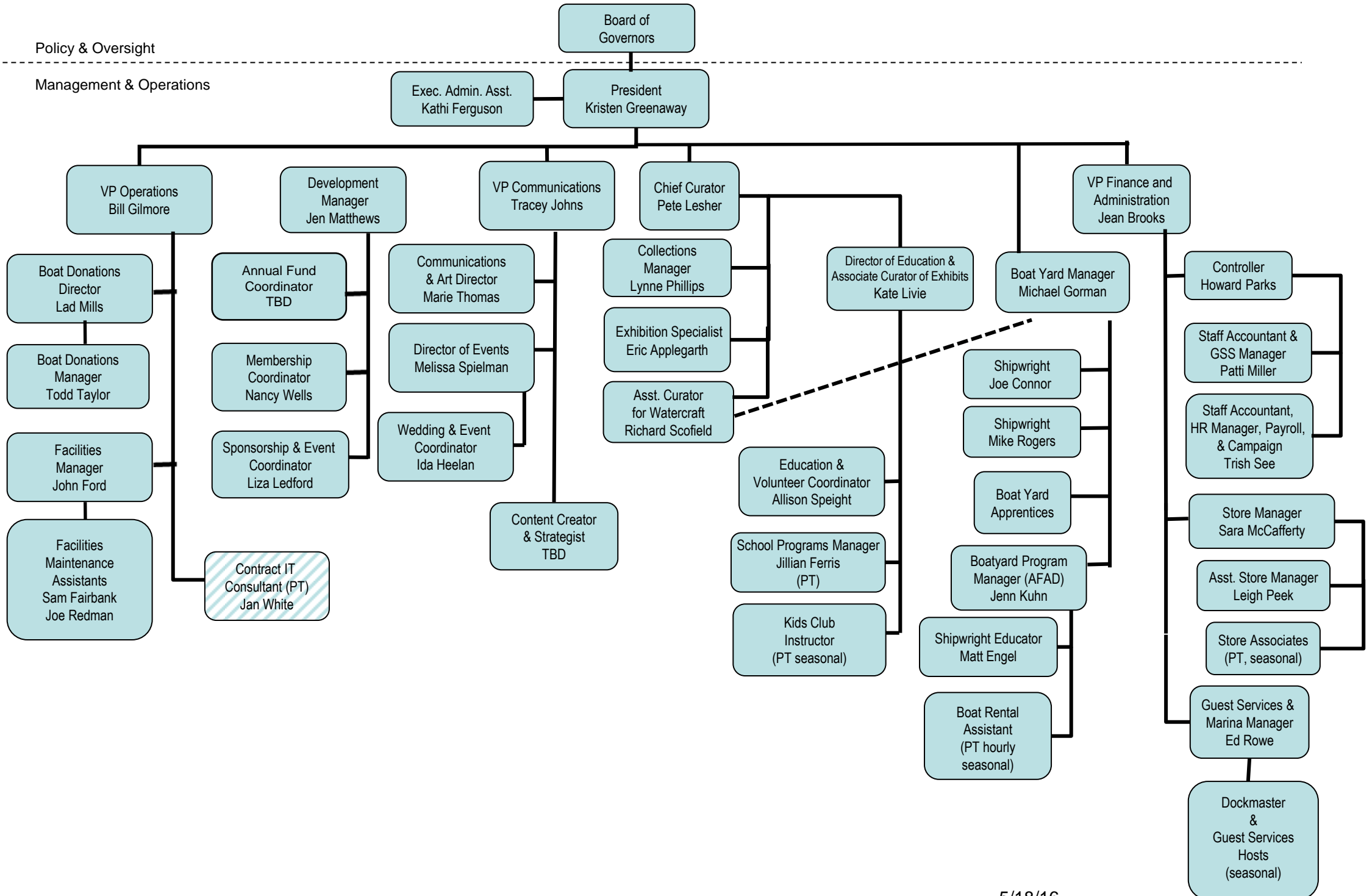


CBMM Organization Chart



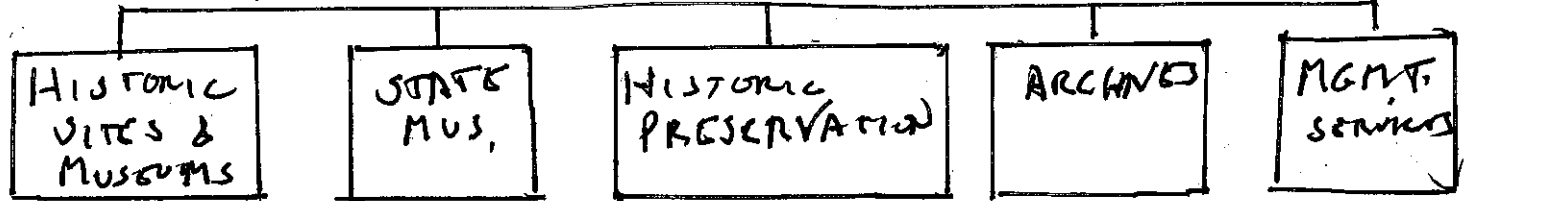
ORG. CHART FOR ERIE MARITIME MUS.

PHMC - Pennsylvania Historical and Museum Commission
Board 14 Appntd. by Gov

Smallest State Agency
200 employees
\$ 20 mil. yr

Exec. Dir.

(5 Bureau Directors)



Western Division

CENTRAL DIV.

EASTERN DIV.

PLACED PROPERTIES

(14 HISTORIC SITES AND MUSEUMS ADMINISTERED BY PHMC & LOCAL ASSOCIATES)

(8 SITES)
FORMERLY PHMC RUN -
NOW LEASED TO PRIVATE NON-PROFIT

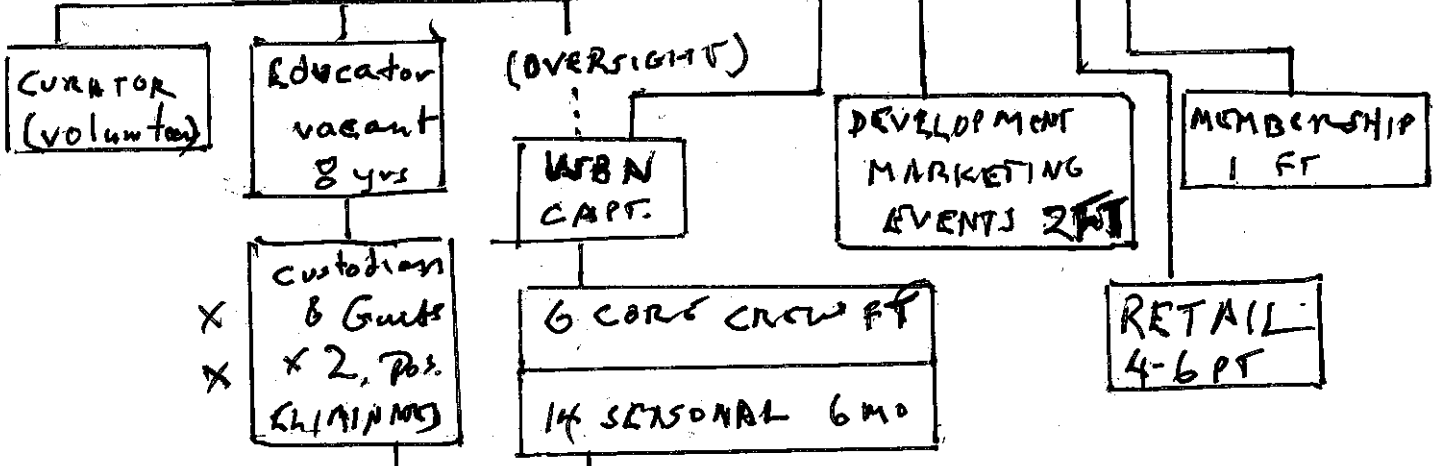
ERIE MARITIME MUSEUM & US BRIG NIAGARA

FLAGSHIP NIAGARA LEAGUE ASSOCIATED GROUP
Private Non-Profit
16 BOARD MEMBERS

EMM ADMINISTRATOR & SENIOR CAPTAIN (N. RYBKA)

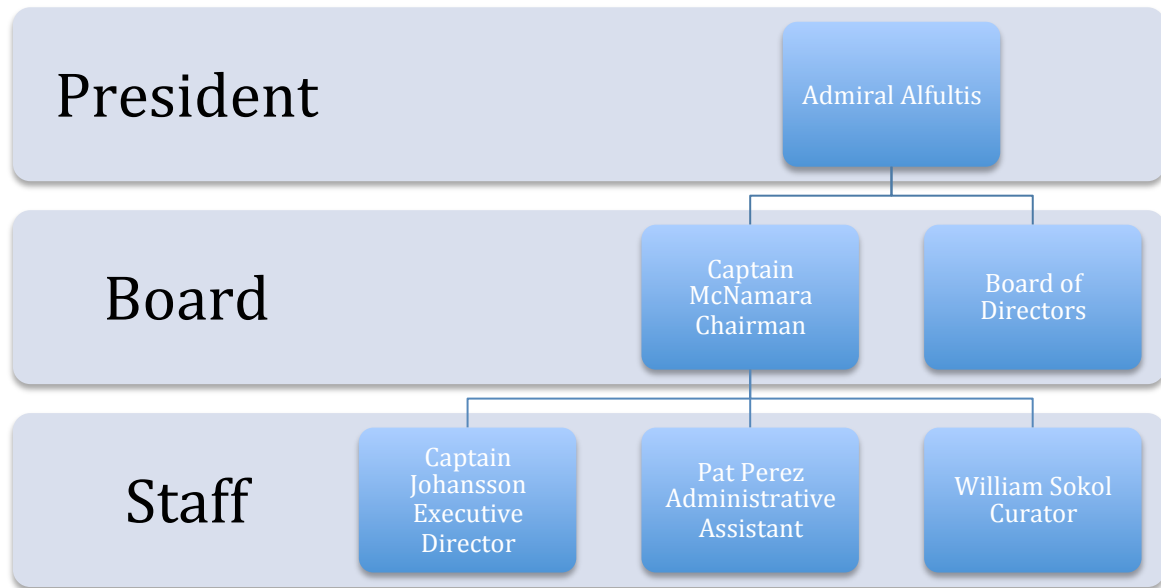
ADMIN ASSIST.

FNL EXEC. DIR

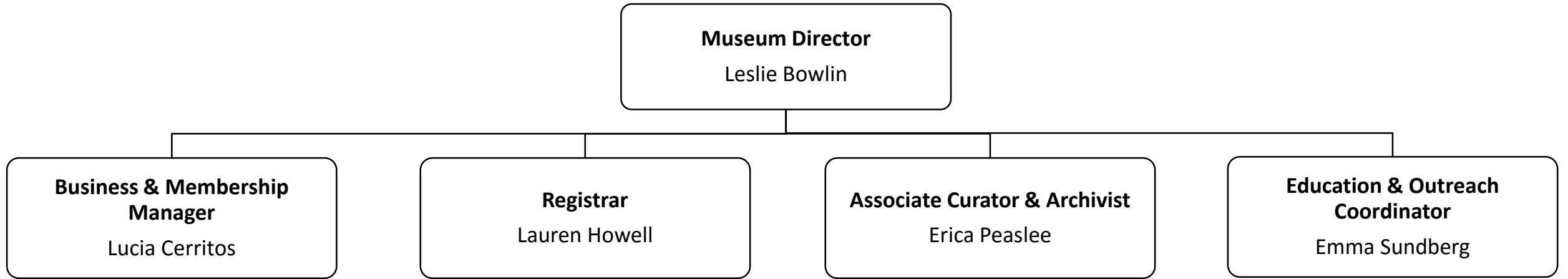


(SHIP'S CREW WERE PHMC SINCE 2010 PMD BY FNL)

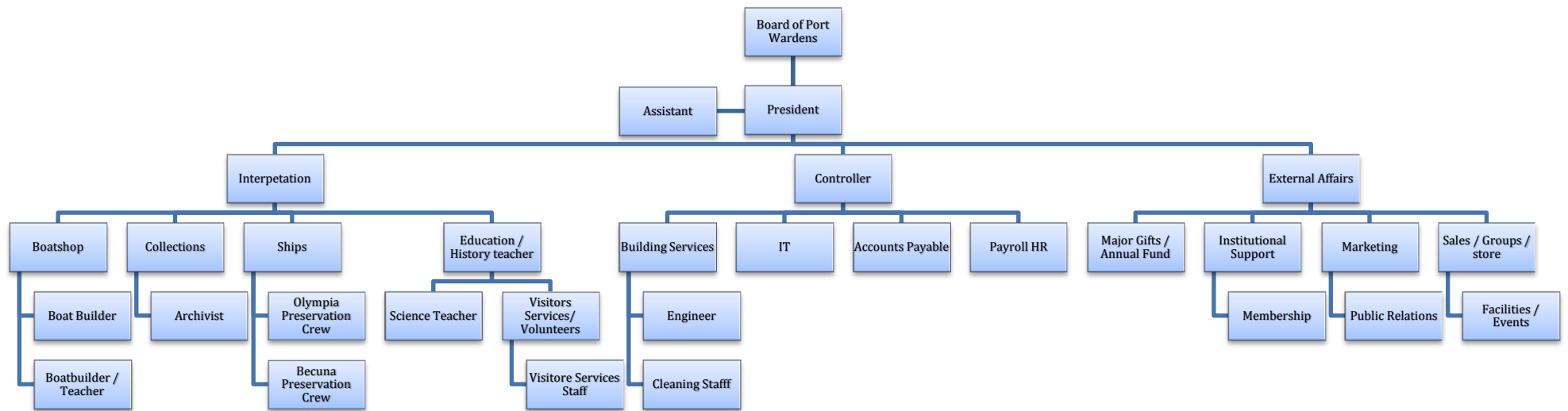
Maritime industry Museum at Fort Schuyler Organizational Chart



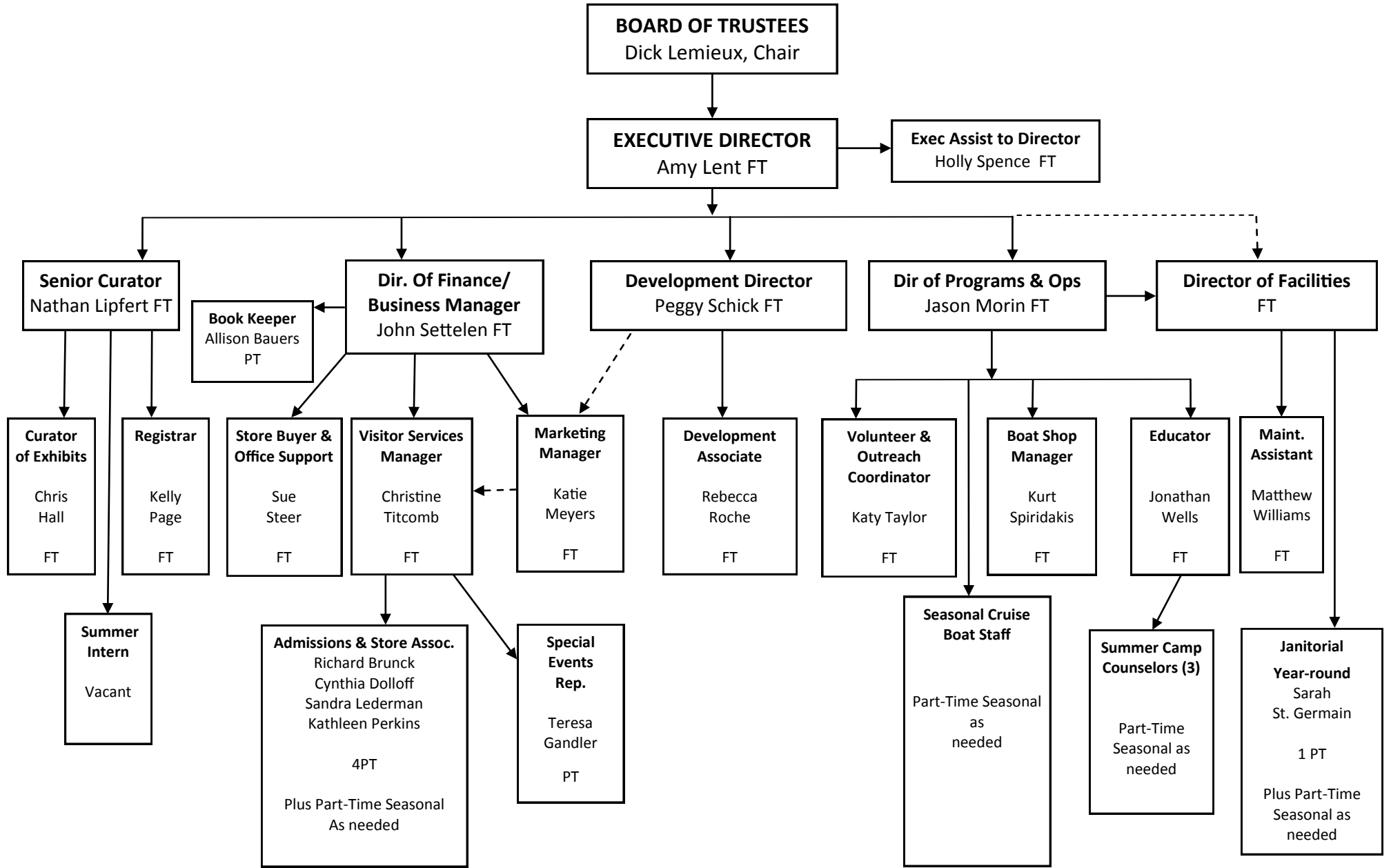
**Houston Maritime Museum
Employee Organizational Chart**



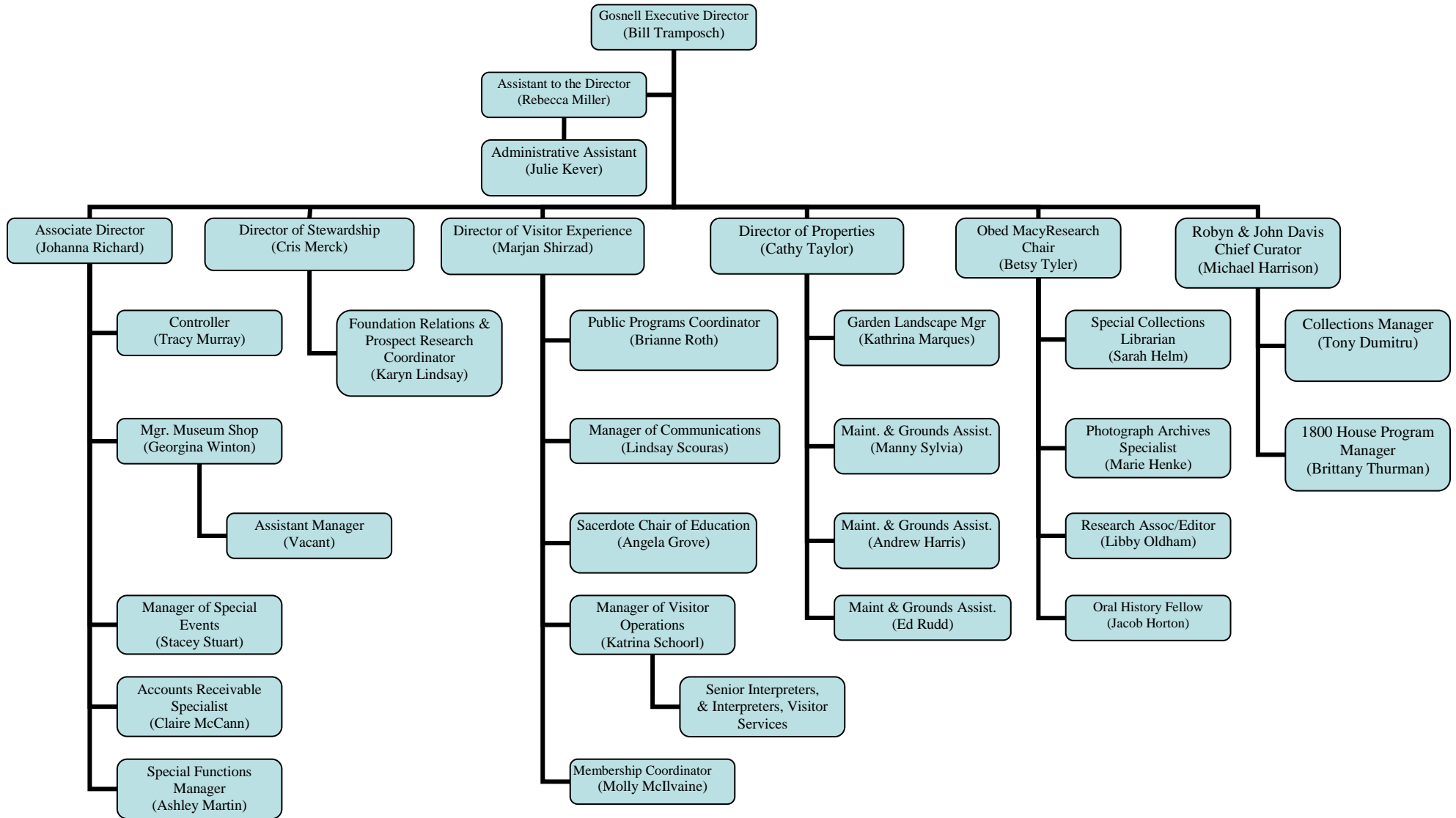
Independence Seaport Musuem



Maine Maritime Museum Organization Chart March 18, 2016



Nantucket Historical Association
 Organizational Chart
 2016





Organizational Chart as of January 2016

